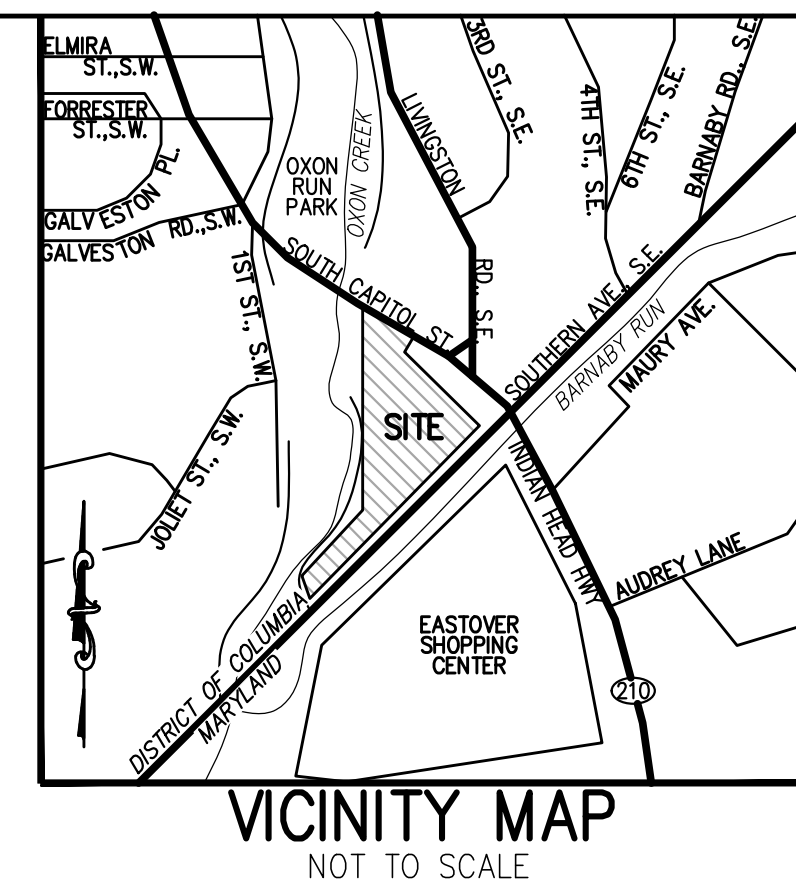


Exhibit B Part
Planting Plans



VICINITY MAP
NOT TO SCALE

VIKA CAPITOL
ENGINEERS * PLANNERS * LANDSCAPE ARCHITECTS * SURVEYORS * GEOMATICS

PROJECT COORDINATOR:
BRIAN RUHL

* VIK A CAPITOL, LLC * 4810 MASSACHUSETTS AVENUE, NW, SUITE 16 * WASHINGTON, DC 20016 * PHONE: 202.244.4140 *
* WWW.VIKACAPITOL.COM *

4669 SOUTH CAPITOL STREET, SW
SQUARE 6274
LOTS 800, 801 AND 802
WASHINGTON, D.C. 20032

PLANTING PLAN (OVERALL)

VIKA CAPITOL REVISIONS

#	DATE	DESCRIPTION

DATE: **02/26/19**
DES. **BR** DWN. **VEM**

SCALE: **1"=100'**

PROJECT/FILE NO. **VC0471A**
SHEET NO. **CIV1200**



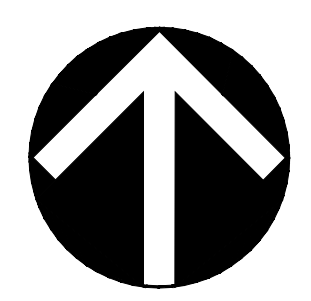
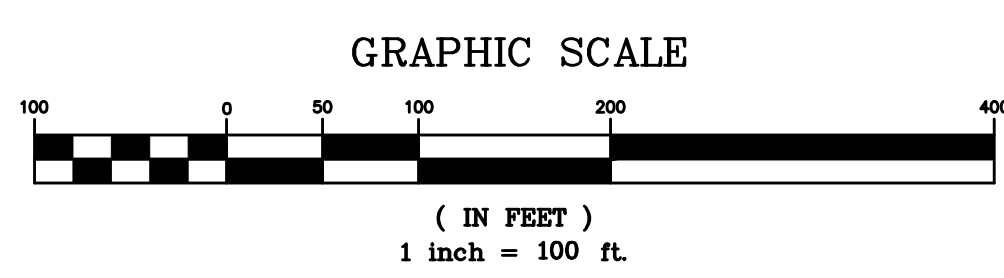
PLANT SCHEDULE

TREES	CODE	QTY	BOTANICAL NAME	COMMON NAME	SIZE
	AA	5	Amelanchier x grandiflora	Apple Serviceberry	2.5" Cal.
	AT	5	Asimina triloba	Pawpaw	2.5" Cal.
	CC	10	Cercis canadensis	Eastern Redbud	2.5" Cal.
	DV	5	Diospyros virginiana	Common Persimmon	2.5" Cal.
	JE	5	Juniperus virginiana	Eastern Red Cedar	2.5" Cal.
	PV	5	Pinus virginiana	Virginia Pine	2.5" Cal.
	PY	6	Prunus x yedoensis	Yoshino Cherry	2.5" Cal.

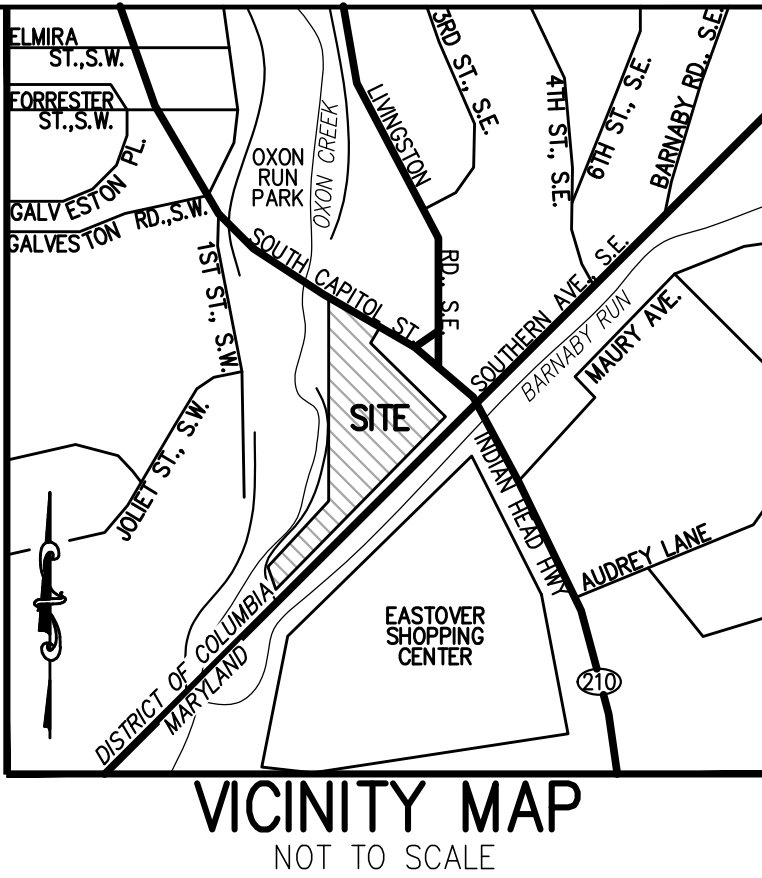
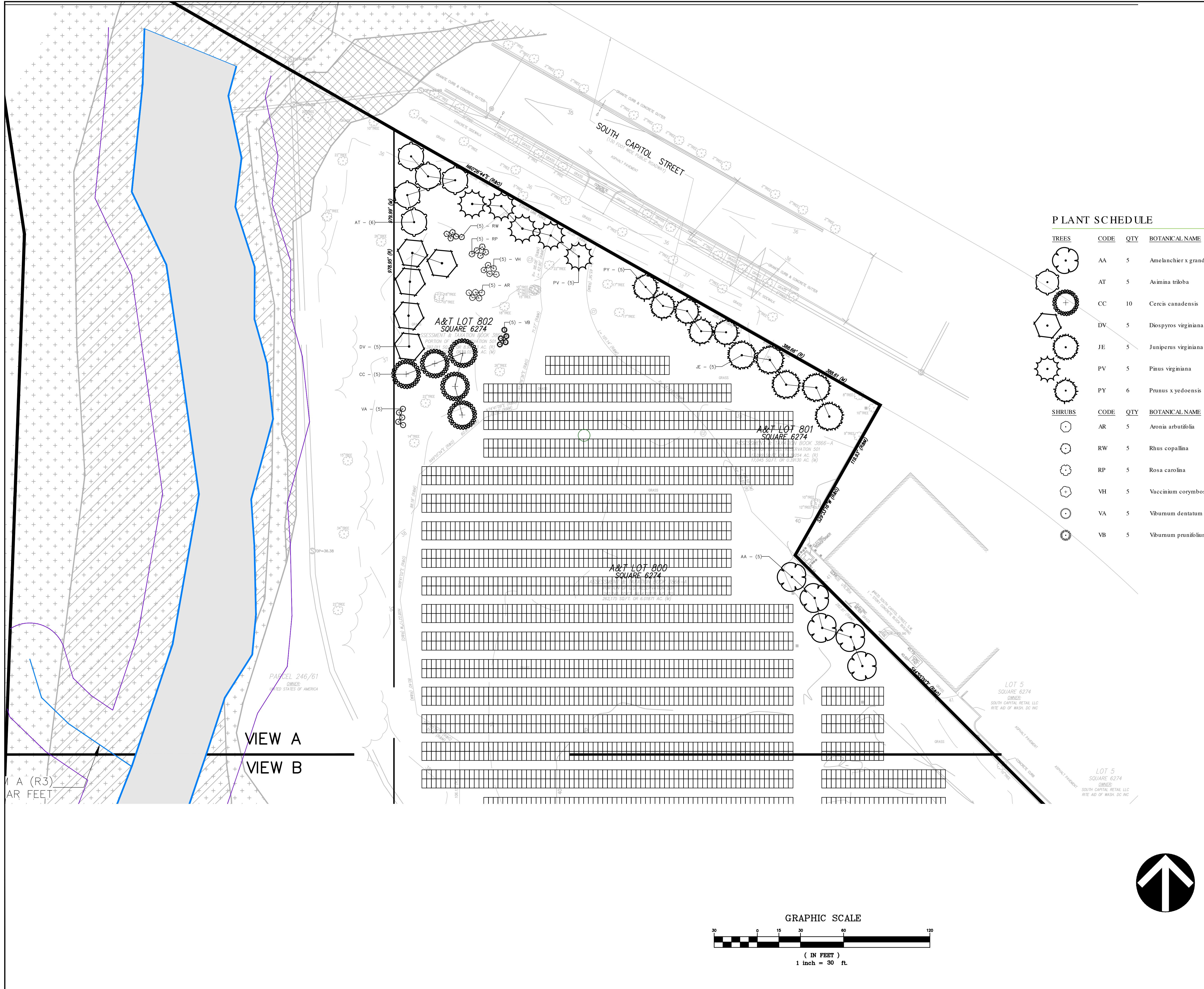
SHRUBS	CODE	QTY	BOTANICAL NAME	COMMON NAME	SIZE	CONTAINER
	AR	5	Aronia arbutifolia	Red Chokeberry	3 gal.	B&B
	RW	5	Rhus copallina	Winged Sumac	3 gal.	B&B
	RP	5	Rosa carolina	Carolina Rose	3 gal.	B&B
	VH	5	Vaccinium corymbosum	Highbush Blueberry	3 gal.	B&B
	VA	5	Viburnum dentatum	Viburnum	3 gal.	B&B
	VB	5	Viburnum prunifolium	Blackhaw Viburnum	3 gal.	B&B

LEGEND

- | | | | | | |
|--|----------------------------------|--|----------------------------|--|-------------------------------------|
| | CABLE TELEVISION CONDUIT | | SANITARY CLEANOUT | | CONC. CONCRETE |
| | ELECTRICAL CONDUIT | | STORM DRAIN MANHOLE | | C&G CURB AND GUTTER |
| | EDGE OF PAVEMENT | | ELECTRICAL JUNCTION BOX | | BLDG. BUILDING |
| | FENCE LINE | | ELECTRICAL MANHOLE | | STY. STORY |
| | NATURAL GAS CONDUIT | | FIRE DEPARTMENT CONNECTION | | TRV ELECTRICAL TRANSFORMER |
| | OVERHEAD WIRES | | FIRE HYDRANT | | ASPH. ASPHALT |
| | TELEPHONE/COMMUNICATIONS CONDUIT | | GAS MANHOLE | | ESMT. EASEMENT |
| | PROPERTY LINES | | GUY POLE | | RCP REINFORCED CONCRETE PIPE |
| | PUBLIC UTILITIES EASEMENTS | | WATER METER | | CMP CORRUGATED METAL PIPE |
| | SANITARY SEWER CONDUIT | | WATER MANHOLE | | BRL BUILDING RESTRICTION LINE |
| | STORM DRAIN CONDUIT | | WATER VALVE | | R/W RIGHT-OF-WAY |
| | WATER CONDUIT | | BOLLARD | | |
| | | | LIGHT POLE | | |
| | | | PHONE PEDESTAL | | |
| | | | PHONE MANHOLE | | |
| | | | UTILITY POLE | | |
| | | | SANITARY MANHOLE | | |
| | | | TRAFFIC CONTROL BOX | | |
| | | | TRAFFIC SIGNAL POLE | | |
| | | | TREE | | |
| | | | CABLE TELEVISION PEDESTAL | | |
| | | | UNKNOWN UTILITY MANHOLE | | |
| | | | WATER METER | | |
| | | | WATER MANHOLE | | |
| | | | WATER VALVE | | |
| | | | SIGN POST | | |
| | | | WOOD POST | | |
| | | | INLETS | | |
| | | | CURB INLET | | |



LAYOUT: 1200 PLANTING PLAN OVERALL, Plotted by: islan



PLANT SCHEDULE

TREES	CODE	QTY	BOTANICAL NAME	COMMON NAME	SIZE	
	AA	5	Ametanchier x grandiflora	Apple Serviceberry	2.5" Cal.	
	AT	5	Asimina trioba	Pawpaw	2.5" Cal.	
	CC	10	Cercis canadensis	Eastern Redbud	2.5" Cal.	
	DV	5	Diospyros virginiana	Common Persimmon	2.5" Cal.	
	JE	5	Juniperus virginiana	Eastern Red Cedar	2.5" Cal.	
	PV	5	Pinus virginiana	Virginia Pine	2.5" Cal.	
	PY	6	Prunus x yedoensis	Yoshino Cherry	2.5" Cal.	
SHRUBS	CODE	QTY	BOTANICAL NAME	COMMON NAME	SIZE	CONTAINER
	AR	5	Aronia arbutifolia	Red Chokeberry	3 gal.	B&B
	RW	5	Rhus copallina	Winged Sumac	3 gal.	B&B
	RP	5	Rosa carolina	Carolina Rose	3 gal.	B&B
	VH	5	Vaccinium corymbosum	Highbush Blueberry	3 gal.	B&B
	VA	5	Viburnum dentatum	Viburnum	3 gal.	B&B
	VB	5	Viburnum prunifolium	Blackhaw Viburnum	3 gal.	B&B

VIKA CAPITOL
 ENGINEERS * PLANNERS * LANDSCAPE ARCHITECTS * SURVEYORS * GEOMATICS

BRIAN RUHL
 PROJECT COORDINATOR

4810 MASSACHUSETTS AVENUE, NW, SUITE 16
 WASHINGTON, DC 20016 * PHONE: 202.244.4140
 WWW.VIKACAPITOL.COM

4669 SOUTH CAPITOL STREET, SW
SQUARE 6274
LOTS 800, 801 AND 802
 WASHINGTON, D.C. 20032

PLANTING PLAN (VIEW A)

VIKA CAPITOL REVISIONS

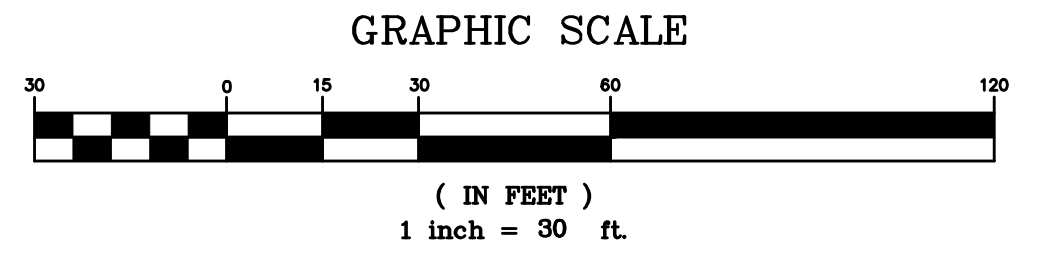
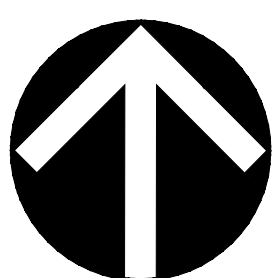
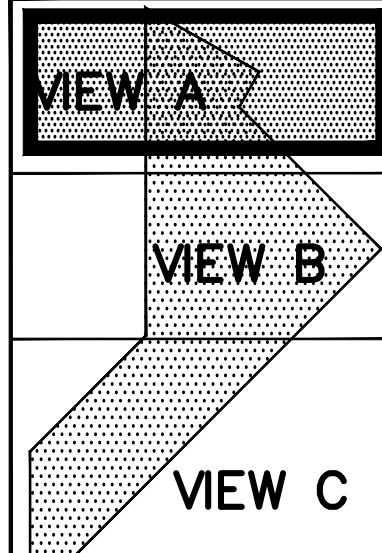
#	DATE	DESCRIPTION

DATE: **02/26/19**
 DES. **BR** DWN. **VEM**

SCALE: **1"=20'**

PROJECT/FILE NO. **VC0471A**

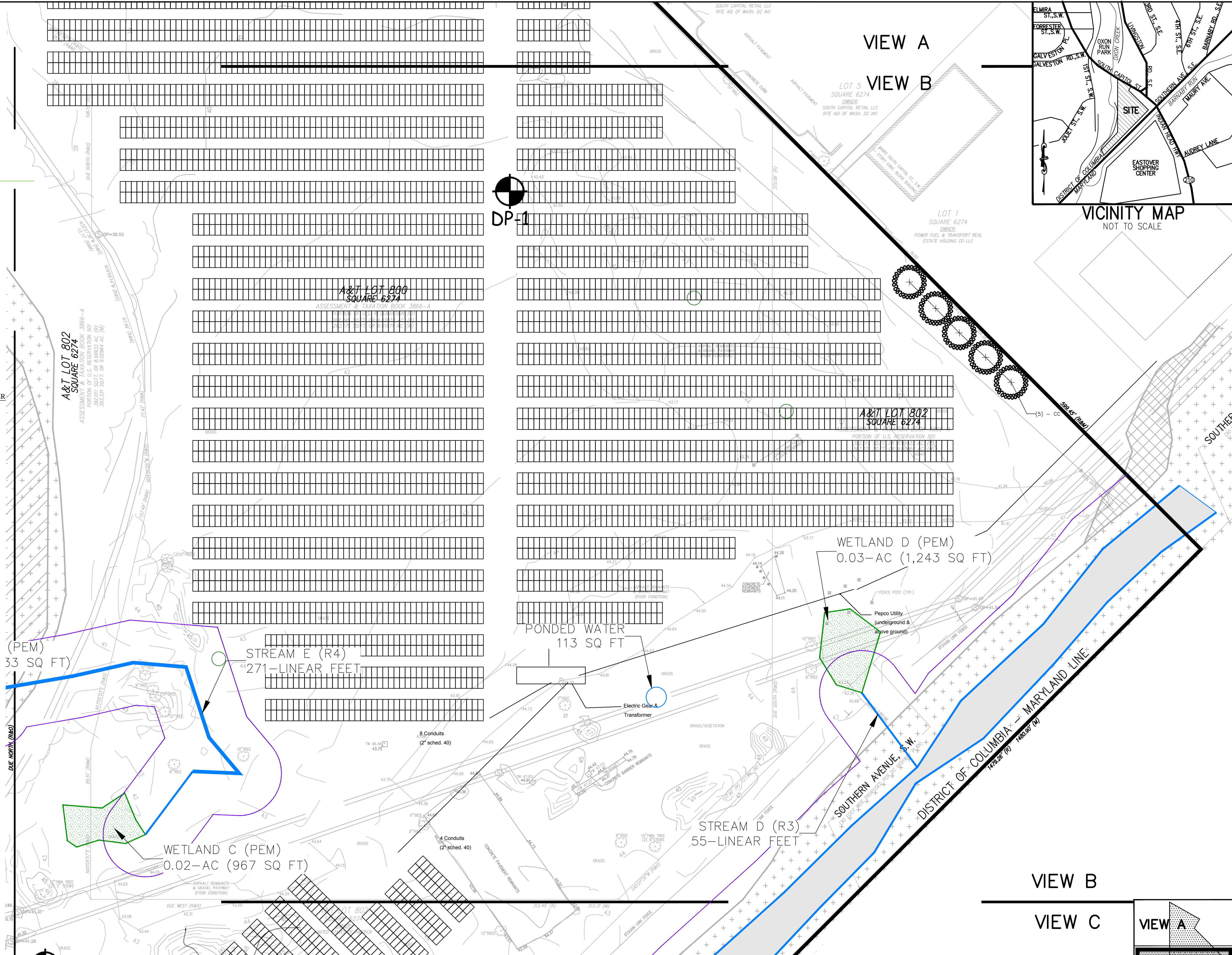
SHEET NO. **CIV1210**



LAYOUT: 1210 PLANTING PLAN VIEW A, Plotted By: jalam

PLANT SCHEDULE

TREES	CODE	QTY	BOTANICAL NAME	COMMON NAME	SIZE	
	AA	5	Amelanchier x grandiflora	Apple Serviceberry	2.5" Cal.	
	AT	5	Asimina triloba	Pawpaw	2.5" Cal.	
	CC	10	Cercis canadensis	Eastern Redbud	2.5" Cal.	
	DV	5	Diospyros virginiana	Common Persimmon	2.5" Cal.	
	JE	5	Juniperus virginiana	Eastern Red Cedar	2.5" Cal.	
	PV	5	Pinus virginiana	Virginia Pine	2.5" Cal.	
	PY	6	Prunus x yedoensis	Yoshino Cherry	2.5" Cal.	
SHRUBS	CODE	QTY	BOTANICAL NAME	COMMON NAME	SIZE	CONTAINER
	AR	5	Aronia arbutifolia	Red Chokeberry	3 gal.	B&B
	RW	5	Rhus copallina	Winged Sumac	3 gal.	B&B
	RP	5	Rosa carolina	Carolina Rose	3 gal.	B&B
	VH	5	Vaccinium corymbosum	Highbush Blueberry	3 gal.	B&B
	VA	5	Viburnum dentatum	Viburnum	3 gal.	B&B
	VB	5	Viburnum prunifolium	Blackhaw Viburnum	3 gal.	B&B



VIEW A
VIEW B



VIKA CAPITOL
ENGINEERS * PLANNERS * LANDSCAPE ARCHITECTS * SURVEYORS * GEOMATICS

PROJECT COORDINATOR:
BRIAN RUHL

4810 MASSACHUSETTS AVENUE, NW, SUITE 16
WASHINGTON, DC 20016 * PHONE: 202.244.4140
WWW.VIKACAPITOL.COM

4669 SOUTH CAPITOL STREET, SW
SQUARE 6274
LOTS 800, 801 AND 802
WASHINGTON, D.C. 20032

PLANTING PLAN (VIEW B)

VIKA CAPITOL REVISIONS

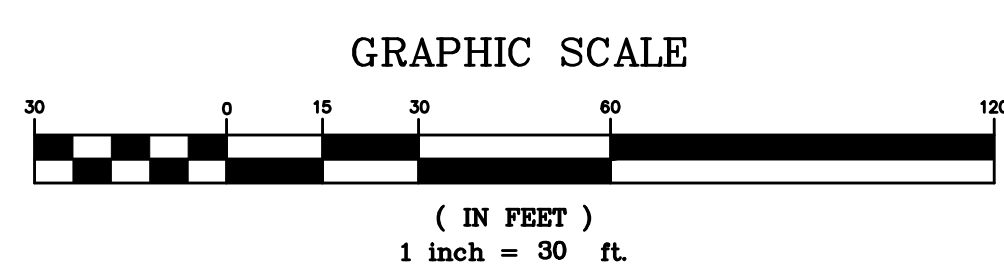
#	DATE	DESCRIPTION

DATE: **02/26/19**
DES. **BR** DWN. **VEM**

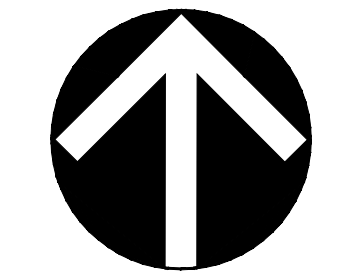
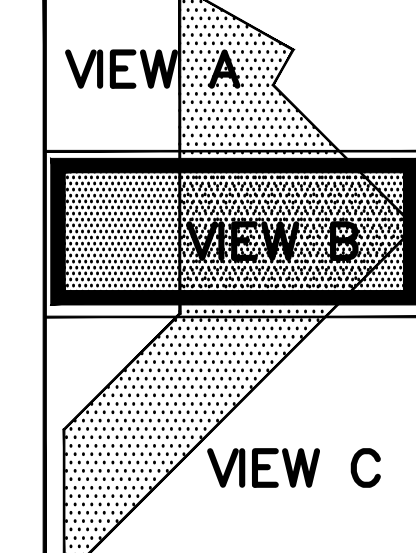
SCALE: **1"=20'**

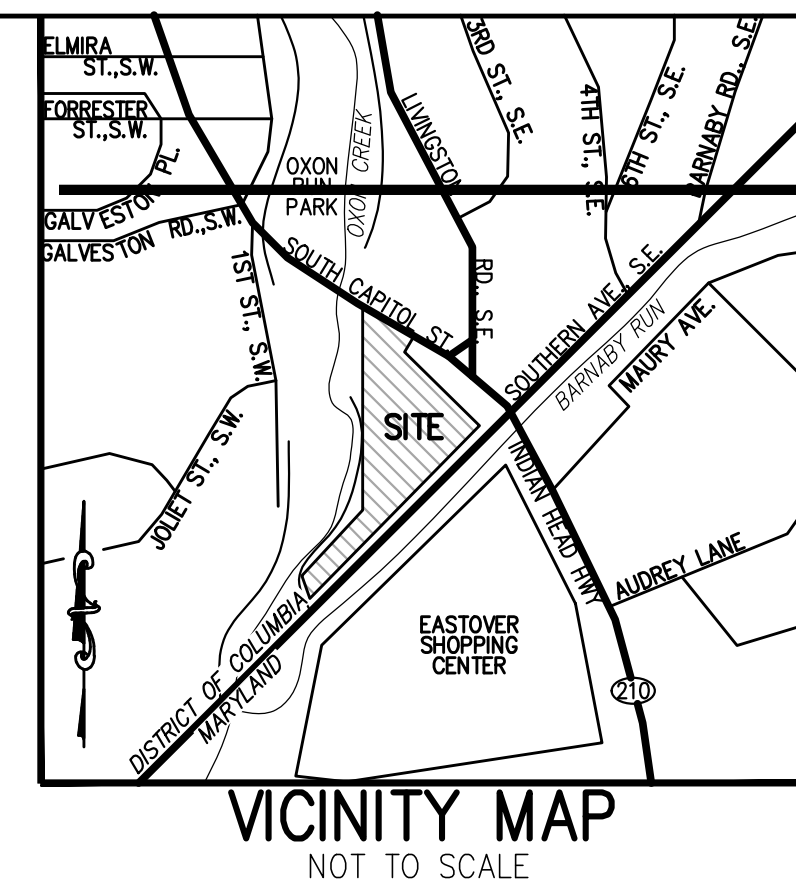
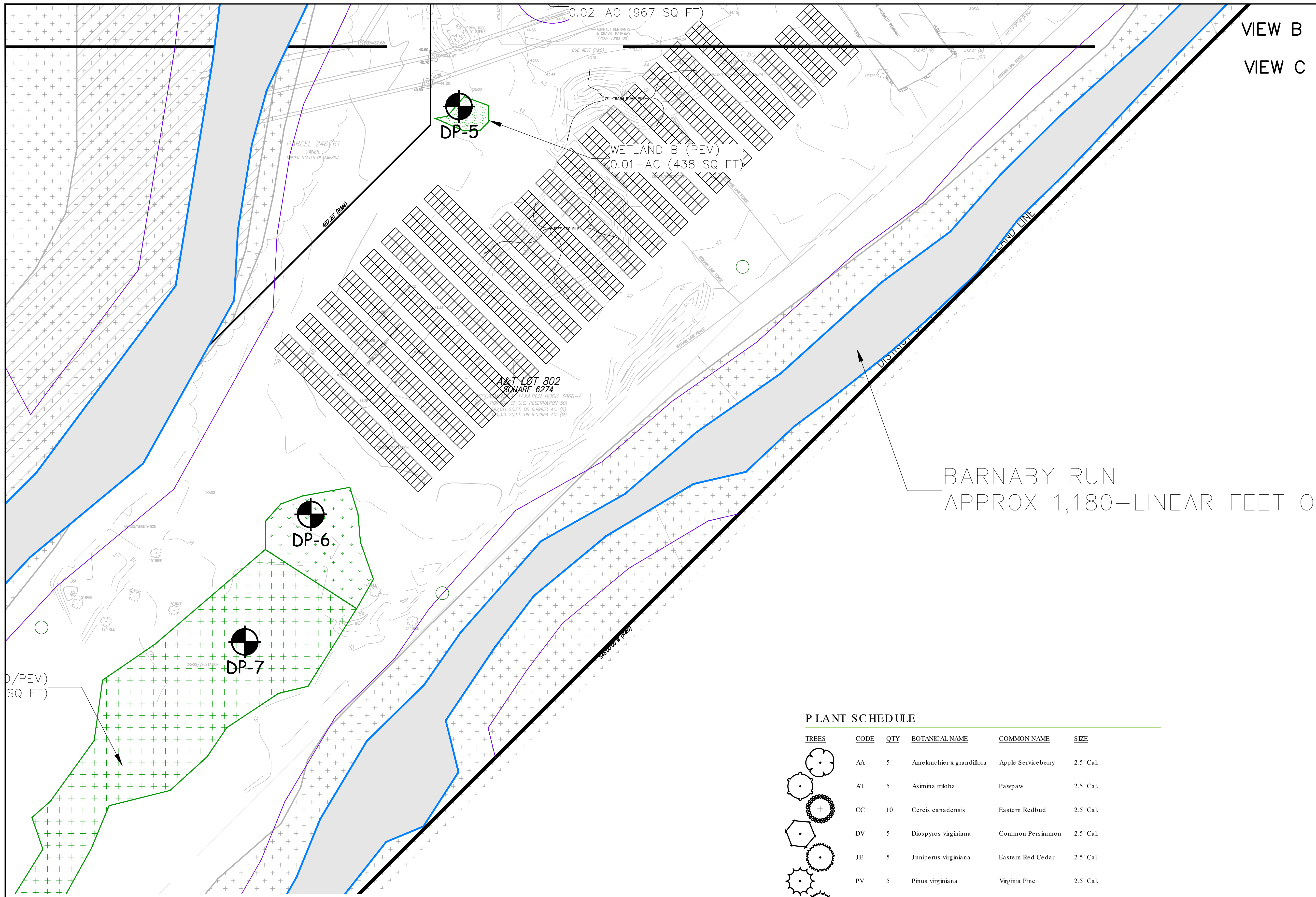
PROJECT/FILE NO. **VC0471A**

SHEET NO. **CIV01215**



VIEW B
VIEW C





VKA CAPITOL

ENGINEERS * PLANNERS * LANDSCAPE ARCHITECTS * SURVEYORS * GEOMATICS

PROJECT COORDINATOR:
BRIAN RUHL

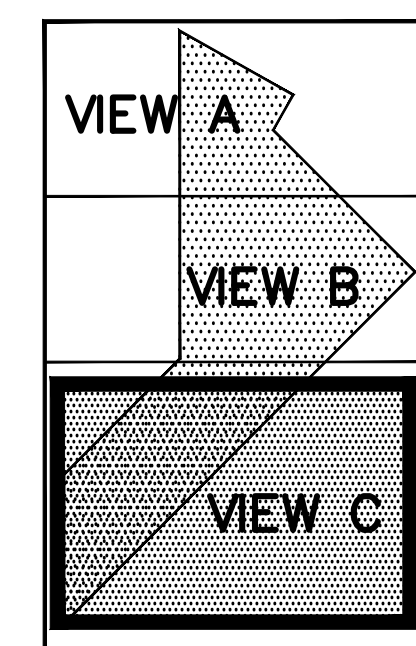
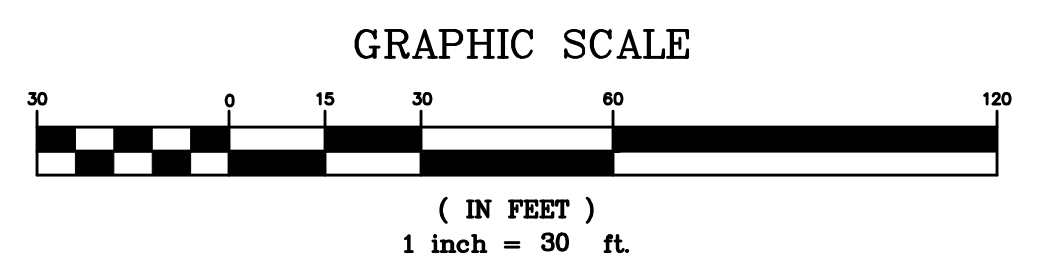
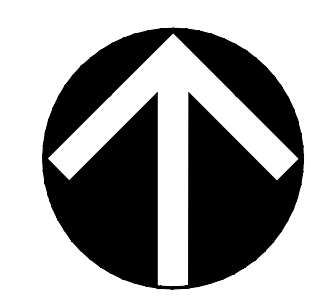
4810 MASSACHUSETTS AVENUE, NW SUITE 16
WASHINGTON, DC 20016 * PHONE: 202.244.4140 *
WWW.VIKACAPITOL.COM *

4669 SOUTH CAPITOL STREET, SW
SQUARE 6274
LOTS 800, 801 AND 802
WASHINGTON, D.C. 20032

PLANTING PLAN
(VIEW C)

PLANT SCHEDULE

TREES	CODE	QTY	BOTANICAL NAME	COMMON NAME	SIZE	
	AA	5	Amelanchier x grandiflora	Apple Serviceberry	2.5" Cal.	
	AT	5	Asimina triloba	Pawpaw	2.5" Cal.	
	CC	10	Cercis canadensis	Eastern Redbud	2.5" Cal.	
	DV	5	Diospyros virginiana	Common Persimmon	2.5" Cal.	
	JE	5	Juniperus virginiana	Eastern Red Cedar	2.5" Cal.	
	PV	5	Pinus virginiana	Virginia Pine	2.5" Cal.	
	PY	6	Prunus x yedoensis	Yoshino Cherry	2.5" Cal.	
SHRUBS	CODE	QTY	BOTANICAL NAME	COMMON NAME	SIZE	CONTAINER
	AR	5	Aronia arbutifolia	Red Chokeberry	3 gal.	B&B
	RW	5	Rhus copallina	Winged Sumac	3 gal.	B&B
	RP	5	Rosa carolina	Carolina Rose	3 gal.	B&B
	VH	5	Vaccinium corymbosum	Highbush Blueberry	3 gal.	B&B
	VA	5	Viburnum dentatum	Viburnum	3 gal.	B&B
	VB	5	Viburnum prunifolium	Blackhaw Viburnum	3 gal.	B&B



VKA CAPITOL REVISIONS

#	DATE	DESCRIPTION

DATE: 02/26/19
DES. BR DWN. VEM

SCALE: 1"=20'

PROJECT/FILE NO.
VC0471A

SHEET NO.
CIV1220

LAYOUT: 1220 PLANTING PLAN VIEW C, Plotted By: Islam

S:\000-1000\0471A - 4669 South Capitol Street, SW\cadd\construction documents\VC0471A_620.dwg - May 01, 2019 AT 8:17:28 AM

Serviceberry (*Amelanchier grandiflora*)



TAG THIS PRESENTATION: @DOEE_DC



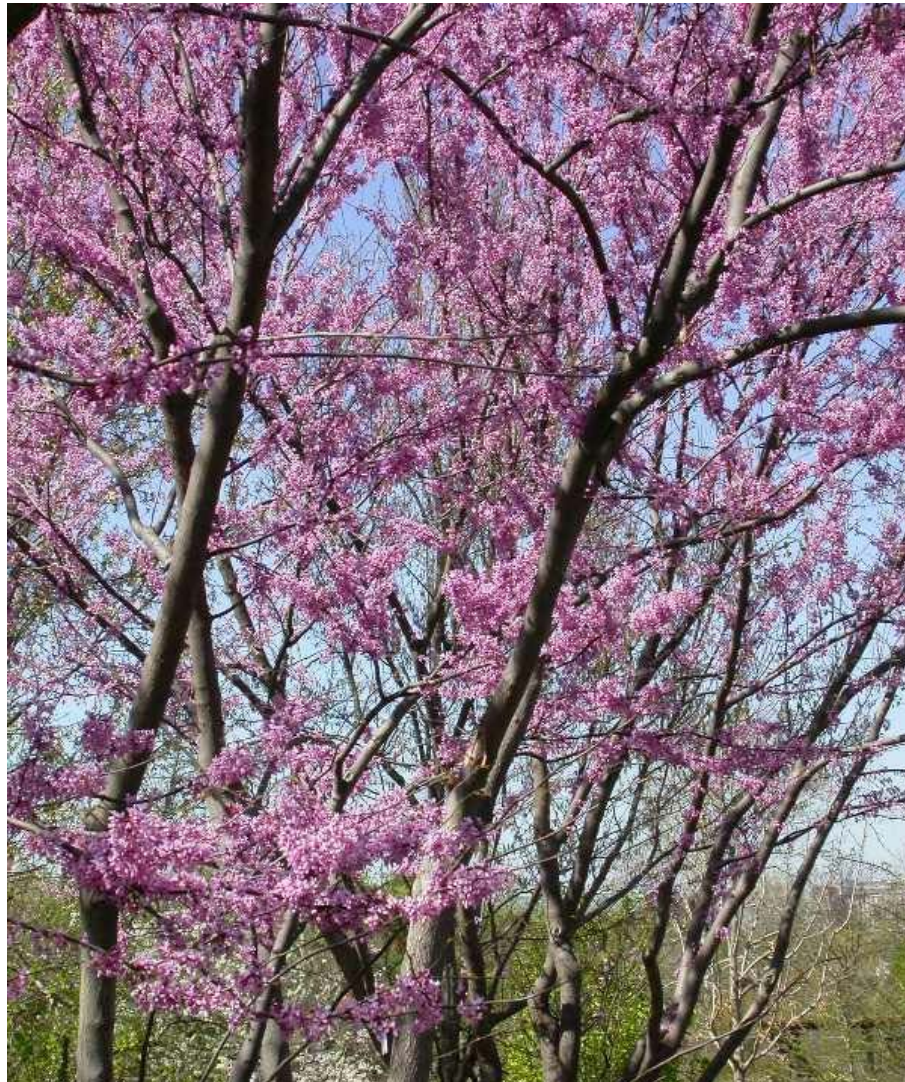
Paw-paw (*Asimina triloba*)



TAG THIS PRESENTATION: @DOEE_DC



Eastern Redbud (*Cercis canadensis*)



Persimmon (*Diospyros virginiana*)



Eastern redcedar (*Juniper virginiana*)



Virginia Pine (*Pinus virginiana*)



TAG THIS PRESENTATION: @DOEE_DC 

Yoshino Cherry (*Prunus yedoensis*)

